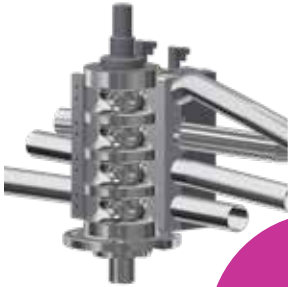


EKF GmbH

EXHAUST TECHNOLOGY



WE PUT TUBES INTO THE DESIRED FORM

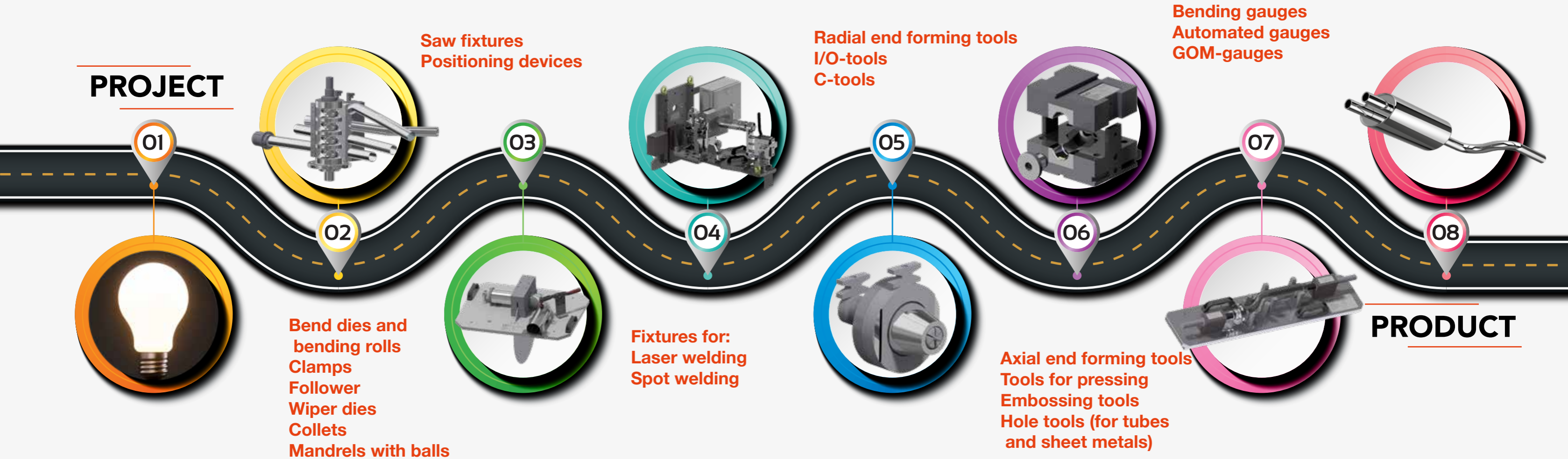
- Bending tools
- Saw fixtures
- Welding fixtures
- Embossing tools
- Axial end forming tools
- Radial end forming tools
- Checking gauges

OUR KNOW-HOW FOR YOUR SUCCESS

We support your project from the beginning. For years we have proven ourselves on the market with resources that embody our Know-how. Our tools match your machines and requirements.

YOUR ADVANTAGES

- Agile organization
- Experienced construction team
- Trained specialists
- Qualified measurement technicians
- Certified to ISO 9001-2015



WE FOR OUR CUSTOMERS



EKF GmbH

Am Erzweg 10
D-66839 Schmelz

Tel.: +49 6887 90 14 0
Fax: +49 6887 90 14 20
Email: info@ekf-schmelz.de
www.ekf-schmelz.de

Industries

Forming technology
Exhaust technology
Car-Body technology
Chassis technology
Medical technology
Food technology
Subcontracting

ABOUT US

We are a medium-sized family-owned company which is able to look back on a 30-year corporate history in the year 2018. Being an efficiently, economically sound company, EKF develops, manufactures and supplies machines, toolings and devices of highest quality.

How does our customers benefit from the fact that we exist?

We love what we do! This is reflected in the quality of our products. Our highly motivated team is at your side from the creation of offers through construction to production. We provide you with a complete product portfolio. With our 360° view for your project, your product is guaranteed to succeed. Planning security, cost transparency, quality promise and adherence to delivery dates - from the beginning!

We analyse your requirements, define new processes and show budget-dependent alternatives to develop the best possible solution together with you.

We provide you with the opportunity to produce your product with high quality at low cost. Our tools ensure the high quality of your end products economically. Our high quality standard is reflected in an increase of productivity and a minimal wear to tools.

For more information:

Forming technology & Crimping technology

find at: www.ekf-schmelz.de